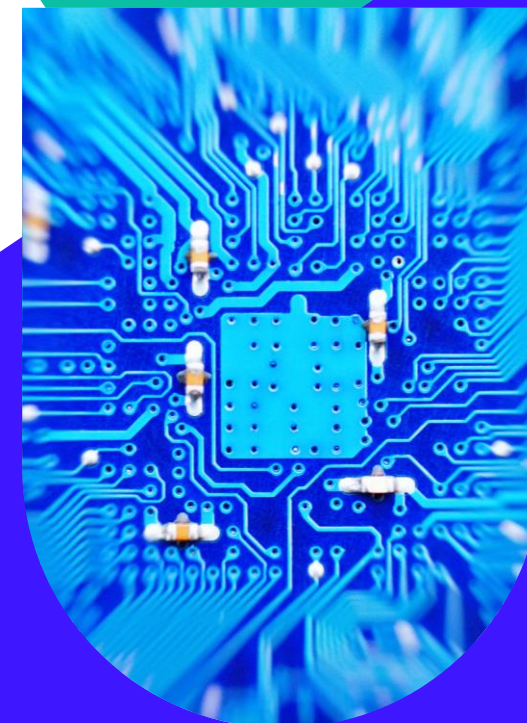


Hong Kong PhD Fellowship Opportunities



Outlines

- **Welcome to Hong Kong**
- Hong Kong Baptist University
- Computer Science Department
- About Hong Kong PhD fellowship scheme
- Q&A

Welcome to Hong Kong

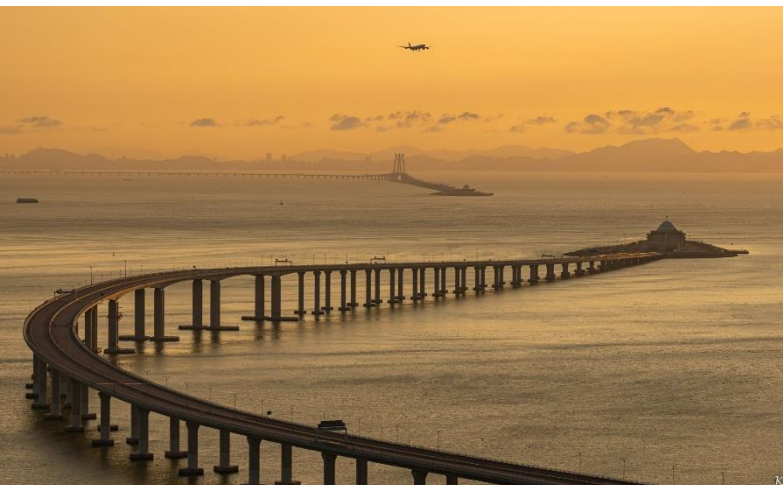
Fact Sheet

- Population ~ 7.4 million
- Size: 1,104 km²



Welcome to Hong Kong

- Hong Kong is a free and dynamic society where creativity and entrepreneurship converge.
- Strategically located in the heart of Asia, it is a cosmopolitan city offering global connectivity, security, and rich diversity, and is home to a unique network of people who celebrate excellence and quality living.





A CITY OF **QUALITY LIVING**
HONG KONG



Outlines

- Welcome to Hong Kong
- **Hong Kong Baptist University**
- About Hong Kong PhD fellowship scheme
- Computer Science Department
- Q&A

Hong Kong Baptist University (HKBU)

- Funded by the Government
- Established in **1956** – the **2nd** oldest university in HK
- **About 50** undergraduate and
- **Over 50** postgraduate programs

➔ **> 12,000** current students



Excellent Facilities



Library provides access to 420+ databases, 220.4K+ e-journals, 1.8M+ e-book titles, 1M+ printed volumes, and 137K+ multimedia items



Well-equipped classrooms



Excellent computer hardware/software



Sport centers and swimming pools



Medical and dental clinics



Outlines

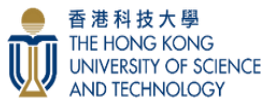
- Welcome to Hong Kong
- Hong Kong Baptist University
- **Computer Science Department**
- About Hong Kong PhD fellowship scheme
- Q&A

Department of Computer Science



- 1 ACM Fellow
- 1 AAAS Fellow
- 10 Top 2% Scientists by Stanford University
- 4 IEEE Fellows
- 2 IAPR Fellows

- **Editor-in-Chief**
 - ACM Transactions on Recommender Systems
 - IEEE Transactions on Emerging Topics in Computational Intelligence
- **Associate Editors** of top-tier journals (TPAMI, TKDE, TPDS, TIFS, TBD, etc.)



Research Assessment Exercise 2020

HKBU Computer Science
Ranks **No. 1**
in **Research Outputs**
in RAE 2020

Source: [Results of the RAE 2020 published by UGC](#)

Sector-wide / university	Quality profile & sub-profiles	Percentage judged to meet the standard of:					Legend				
		4*	3*	2*	1*	u/c	4*	3*	2*	1*	u/c
Hong Kong Baptist University	Overall	35	60	5	0	0					
	Outputs	45	51	4	0	0					
	Impact	0	100	0	0	0					
	Environment	25	63	12	0	0					

Subject Ranking

CS Rankings



	Hong Kong	Asia	World
All Areas	#5	#41	#149
Artificial Intelligence	#3	#32	#71
Databases	#3	#8	#18

Source: [CSRankings](#) (2018-2023)

Four Major Research Focuses



Health Informatics



Smart City & Society



Creative Arts & Media

Applications

Artificial Intelligence and Machine Learning



Big Data Analytics and Management



Computer Vision and Pattern Recognition



Distributed Systems and Networking



Research Focuses

Data Analytics and Artificial Intelligence

Theme



HPC Center



HKBU-NIPD Joint Lab



HKBU-Nvidia Joint Lab



Blockchain & FinTech Laboratory

Infrastructure

Artificial Intelligence and Machine Learning



Prof. Jiming Liu

**Associate Vice-President
(Research Development)
and Chair Professor**

Data Analytics and Machine Learning, AI for Social Good, Complex Networks and Web Intelligence, Multi-Agent Complex Systems, Autonomy-Oriented Computing



Prof. William Cheung

**Associate Vice-President
(Transdisciplinary Education)
and Professor**

Artificial Intelligence, Data Mining, Social Network Analysis, Health Informatics



Prof. Li Chen

**Associate Head (Research)
and Professor**

Conversational AI,
Explainable AI,
Recommender Systems,
Human-Computer Interaction

Artificial Intelligence and Machine Learning



Prof. Yifan Chen

Assistant Professor

Statistical Machine Learning
(for LLM),
Graphs and Logistics,
AI for Science



Prof. Bo Han

Assistant Professor

Weakly Supervised Representation
Learning, Security, Privacy and
Robustness in Machine Learning,
Automated, Federated and Graph
Machine Learning, Interdisciplinary
Problems



Prof. Liu Yang

Assistant Professor

Artificial Intelligence, Machine
Learning, Computational
Epidemiology, Infectious
Disease Modeling



Prof. Lu Zhang

Associate Professor

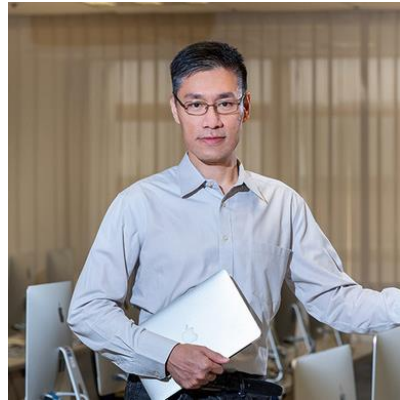
AI in Drug Discovery (Small
Molecule, Aptamer, Chinese
Medicine), AI in Genomics (use
deep learning to decipher the
genome of viruses and bacterial)

Big Data Analytics and Management



Prof. Jianliang Xu
Head and Chair Professor

Big Data Management, Blockchain, Mobile/Pervasive Computing, Data Security and Privacy



Prof. Byron Choi
Associate Head (Teaching and Learning) and Professor

Graph Queries, Database Securities, Time Series Analysis



Prof. Xin Huang
Associate Professor

Data Management, Big Graph Mining & Visualization, Social Network Analysis, Privacy-Aware Computing



Prof. Ma Jing
Assistant Professor

Natural Language Processing, Information Verification, Opinion Mining, Stance Detection, Explainable Machine Learning, Question and Answering, Dialog System



Prof. Renchi Yang
Assistant Professor

Graph query processing, Web Search, Social Network Analysis, Graph Representation Learning

CVPR

Computer Vision and Pattern Recognition



Prof. Yiu Ming Cheung

Chair Professor

Machine Learning, Visual Computing, Data Science, Pattern Recognition, Multi-objective Optimization, Information Security



Prof. Pong Chi Yuen

Chair Professor

Human Face Recognition, Biometric Security and Privacy, Intelligent Video Surveillance



Prof. Jie Chen

Assistant Professor

Computational Photography, 3D Vision, Motion, Art Tech

CVPR

Computer Vision and Pattern Recognition



Prof. Xiaoqing Guo

Assistant Professor

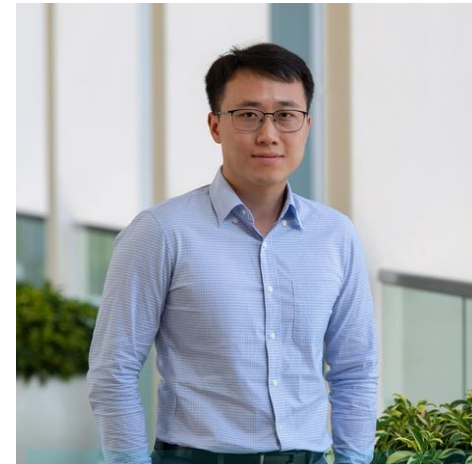
AI in Healthcare
AI for Ultrasound Imaging
Multi-Modal Learning
Human-AI Interaction/
Collaboration
Trustworthy Clinical Decision-
Making



Prof. Renjie Wan

Assistant Professor

Computational
Photography, 3D Vision,
AI security



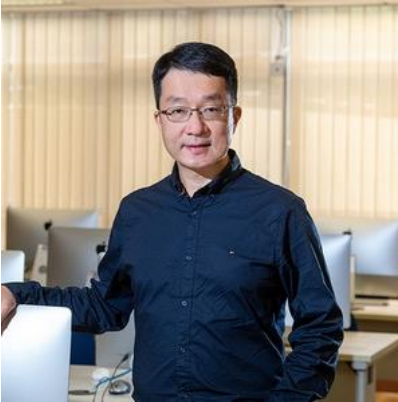
Prof. Kaiyang Zhou

Assistant Professor

Computer Vision &
Pattern Recognition,
Machine Learning &
Deep Learning

DSAN

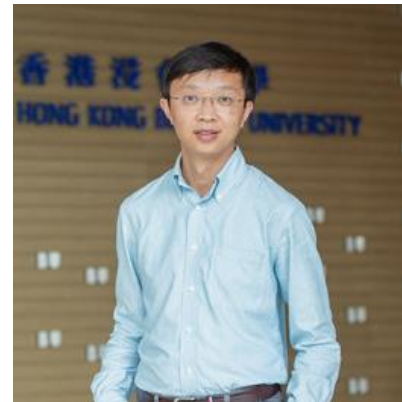
Distributed Systems and Networking



Prof. Yiu Wing Leung

Professor

Networking, Cloud Computing,
Internet computing



Prof. Henry Dai

Associate Professor

Internet of Things, Blockchain,
and Big Data Analytic



Prof. Jinwei Liu

Assistant Professor

Electronic Design Automation,
Combinatorial Optimization,
Machine Learning,
Reinforcement Learning



Prof. Juncheng Wang

Assistant Professor

Networked Systems,
Mobile Communications,
Online Learning and
Optimization



Prof. Amelie Zhou

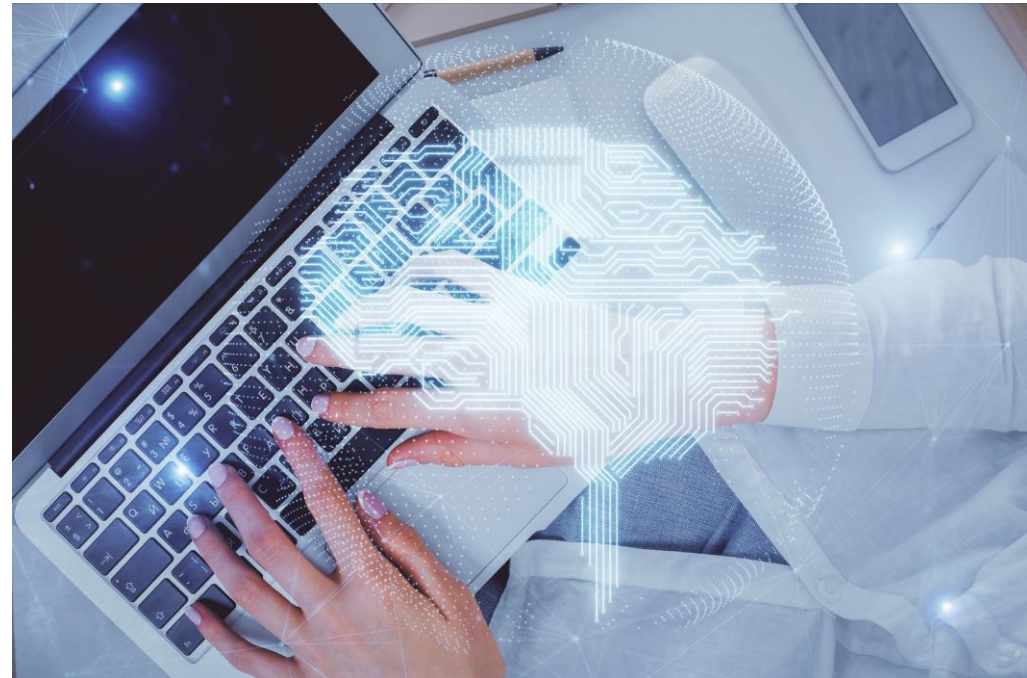
Assistant Professor

Parallel and Distributed
Systems, Cloud Computing,
High-Performance
Computing

Profile of Faculty Members



Potential Research Topics for Admission



World-class Research Facilities



Desktops

- Each new student provided with a desktop with RTX4090/4070 GPU card

GPU Clusters

- 1 Nvidia DGX server with 8 Nvidia Tesla A100-SXM4-40GB
- 6 GPU nodes with 24 Nvidia Ampere A100-80G
- 2 GPU nodes with 4 Nvidia Ampere A100-40G
- 1 Huawei AI server with eight Ascend 9100 NPU-32G

Big Data Cluster

- Hadoop + Spark
- 5 dual-Xeon servers with 120TB of storage

Research Cluster

- 26 dual-Xeon and 6 dual-AMD EPYC servers
- Attached with 1PB storage system

Outlines

- Welcome to Hong Kong
- Hong Kong Baptist University
- Computer Science Department
- **About Hong Kong PhD fellowship scheme**
- Q&A

PhD Program Structure

Normal period of study

- 4 years

Requirement:

- 26 units of coursework + research project
- Typically, 3 units @ course

Guaranteed overseas exchange

- **1-6 months** research in an overseas university or research laboratory

Overseas post-doctoral scheme

- Support fresh graduates to gain more research experience at **renowned overseas universities or research institutes** for half to one year





Scholarship and Financial Support

- **Studentships are provided to full-time PhD students**
 - Current stipend: **~HK\$18,800 per month** for 4 years
- **Financial support for carrying out research-related activities such as attending overseas conferences**
 - **At least HK\$60,000** during the study period
- **More details:**



<https://gs.hkbu.edu.hk/programmes/doctor-of-philosophy-master-of-philosophy-department-of-computer-science>

Hong Kong PhD Fellowship Scheme (HKPFS)

Established by the HK Research Grants Council (RGC) with the aim to attract **the best students in the world** (e.g., **national scholarship awardees** and/or **top 5% of the class**) to pursue their PhD studies in Hong Kong's institutions

HKPFS Applicants	Scholarship
Nominated by HKBU and <u>awarded</u> by HK Government	HK\$2,400,000 during 4-year PhD study (plus up to HK\$350,000 tuition fee waive & overseas conference/attachment support)*
Nominated by HKBU but <u>not awarded</u> by HK Government	HK\$1,348,800 during 4-year PhD study (plus up to HK\$60,000 overseas conference/attachment support)*

* Visit <https://www.comp.hkbu.edu.hk/hkpfs> for a detailed breakdown

Why Applying HKPFS via COMP-HKBU?

	HKPFS	Additional Support by HKBU and COMP
Tuition Waiver# (#HK\$44,500 – HK\$49,400 per academic year)	Nil	First year tuition waiver ; tuition waivers for second to fourth years of study subject to satisfactory academic progress
Stipend	HK\$1,011,600	Additional HK\$1,388,400 for 4-year study
Support for Research-related Activities	HK\$42,000	Additional HK\$60,000
Support for Outstanding PhD Graduates	Nil	Postdoctoral Research Fellowship for furthering research in the top overseas universities

Requirements?

- Applicants seeking admission to the PhD degree programme should possess:
 - A bachelor's or master's degree from a recognized university or comparable institution;
 - Or any other qualification deemed by the Graduate School to be acceptable for this purpose. Candidates may be required to take a qualifying examination, in which event their progress shall be reported to the Graduate School at the end of their first year of study

Selection Criteria

■ Academic Excellence

- Outstanding academic record of current/immediate past affiliated institution(s);
- Open test results (widely recognized tests such as IELTS, TOEFL)

An applicant seeking admission on the basis of a qualification from a university or comparable institution outside Hong Kong of which the language of teaching and/or examination is not English is required to obtain a minimum score in the Test of English as a Foreign Language (TOEFL) at 79 (Internet-based Test) or International English Language Testing System (IELTS) at 6.5. Consideration will also be made for applicants with a minimum overall score in the College English Test (CET)^ Band 6 at 500 and grade B in the CET-SET (Speaking English Test). The TOEFL institution code of the Hong Kong Baptist University is 9467.

■ Research Ability and Potential

- Publication(s), if available;
- Specific research statement and past research training;
- Proposed supervisor in the nominating institution

■ Leadership Ability and Societal Responsibility

- Proven record/experience in extracurricular activities and volunteer work;
- Good to have activities incurring organizing, leading or coordinating elements. Communication, Interpersonal Skills

■ Cultural Diversity

HKPFS application: Timeline

(tentative)

Application starts	1 September 2025
Application deadline	1 December 2025
RGC announces result	Late-March 2026
Make offers and confirm acceptance with awardees	April 2026

Note: You may contact interested supervisor in our department for the preparation of application materials.

Please refer to our departmental website for the up-to-date information: <https://www.comp.hkbu.edu.hk/hkpfs/>

Hong Kong PhD Fellowship Scheme 2026/27

Website :

<https://www.comp.hkbu.edu.hk/hkpfs>

Admission Application :

https://iss.hkbu.edu.hk/amsappl_pg/geninfo.jsf

Application Deadline :

1 December 2025



The poster for the Hong Kong PhD Fellowship Scheme 2026/27 is a colorful infographic. At the top, it features the logos of the Department of Computer Science at Hong Kong Baptist University and the University of Computer Science. The title 'HONG KONG PHD FELLOWSHIP SCHEME' is prominently displayed. Below the title, it lists 'RESEARCH AREAS' including Artificial Intelligence and Machine Learning, Big Data Analytics and Management, DATA ANALYTICS & ARTIFICIAL INTELLIGENCE, Computer Vision and Pattern Recognition, and Distributed Systems and Networking. The 'FINANCIAL SUPPORT' section details the stipend and tuition fees for both HKBU and non-HKBU applicants. A QR code and contact information are provided at the bottom.



WeChat | HKBU CS

Scan the QR Code | Follow us

Where Our PhD Graduates Go?



Industry

facebook

Google

amazon

Tencent 腾讯

Microsoft

dji
大疆創新

PCCW

HUAWEI | NOAH'S ARK LAB

Lenovo Machine Intelligence Center



Academia

香港科技大學
THE HONG KONG
UNIVERSITY OF SCIENCE
AND TECHNOLOGY

ICT 中科院計算所
INSTITUTE OF COMPUTING TECHNOLOGY, CAS

哈爾濱工業大學
Harbin Institute of Technology

清華大學
Tsinghua University

中山大學
SUN YAT-SEN UNIVERSITY

東南大學
Southeast University

北京理工大學
BEIJING INSTITUTE OF TECHNOLOGY

南方理工大學
SOUTHERN UNIVERSITY OF TECHNOLOGY

東華師範大學
EAST CHINA NORMAL UNIVERSITY

香港浸信會大學
HONG KONG BAPTIST UNIVERSITY



Further Research

JOHNS HOPKINS
UNIVERSITY

McGill
UNIVERSITY

RUTGERS

UC San Diego



SFU
SIMON FRASER
UNIVERSITY

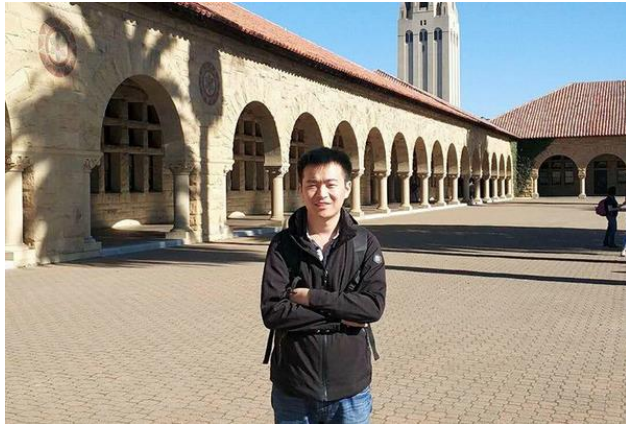
UNIVERSITY OF
LEEDS

NANYANG
TECHNOLOGICAL
UNIVERSITY
SINGAPORE

CDC

CHINESE CENTER FOR DISEASE CONTROL AND PREVENTION
NATIONAL INSTITUTE OF PARASITIC DISEASES

Our Graduates

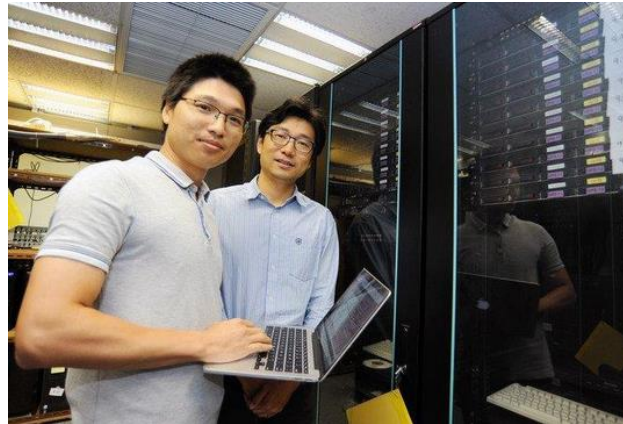


Ye Mang

PhD, HKPFS Awardee, 2019

- Now: Full Professor, Wuhan University
- 海外优青
- Open-world visual learning and its applications in multimedia analysis and reasoning

(8,800+ citations)

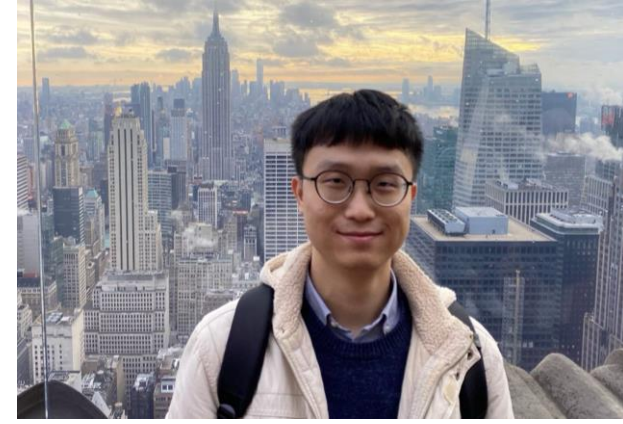


Shi Shaohuai

PhD, 2020

- Now: Full Professor, Harbin Institute of Technology, Shenzhen
- 海外优青
- Performance benchmarking for deep learning frameworks

(2,600+ citations)



Shao Rui

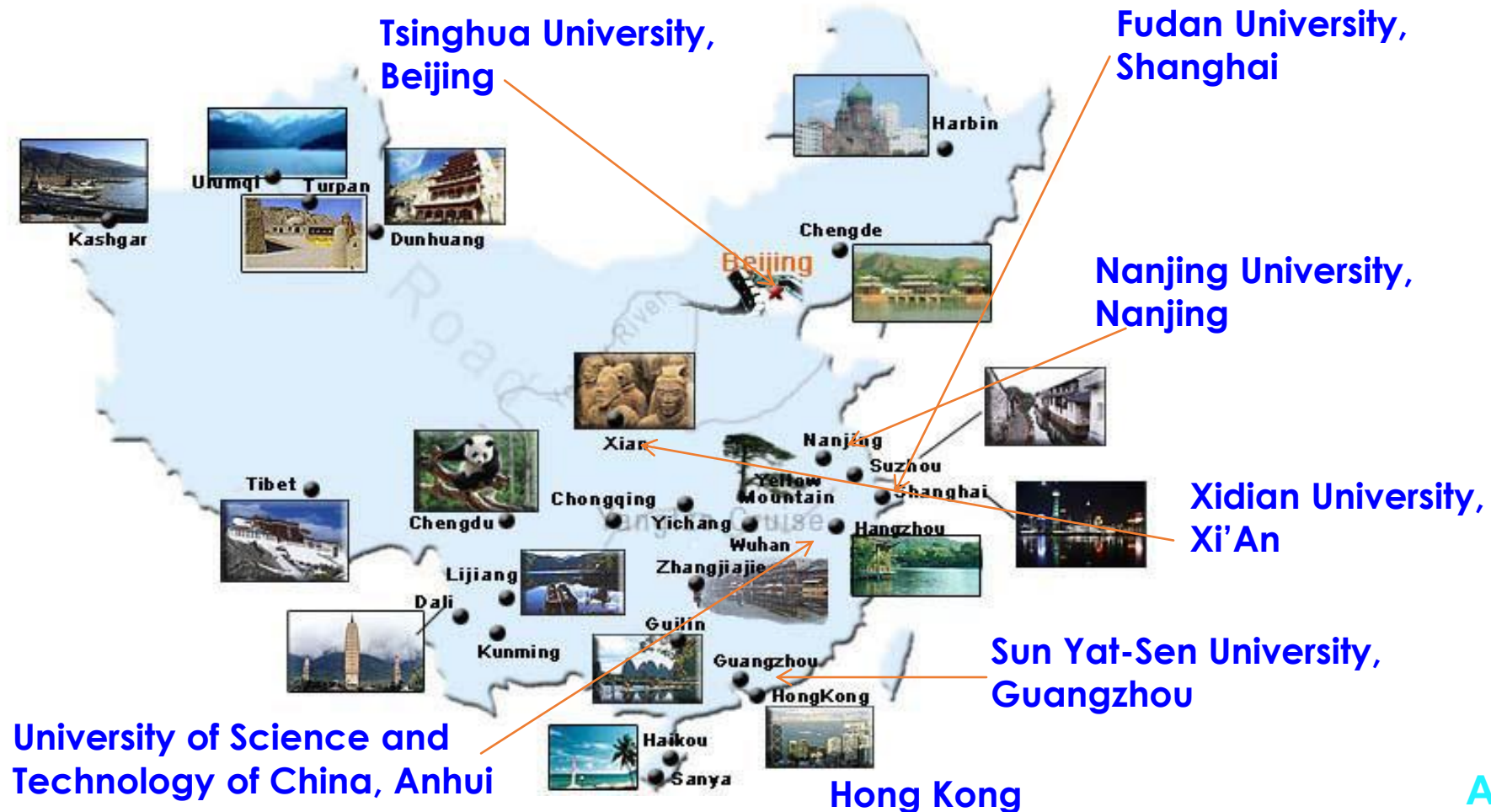
PhD, 2021

- Now: Full Professor, Harbin Institute of Technology, Shenzhen
- 海外优青
- Computer vision and multimodal learning

(1,200+ citations)

Hong Kong is the window to China

Our collaborating universities in China



And more ...

Enquiry

Department of Computer Science, Hong Kong Baptist University

Senior Executive Officer: Ms. Kristina Tsang

Hotline: (+852) 3411 2782 / 3411 7091

Email: comp@comp.hkbu.edu.hk

Site: <https://www.comp.hkbu.edu.hk>



**Thank you for
your attention!**