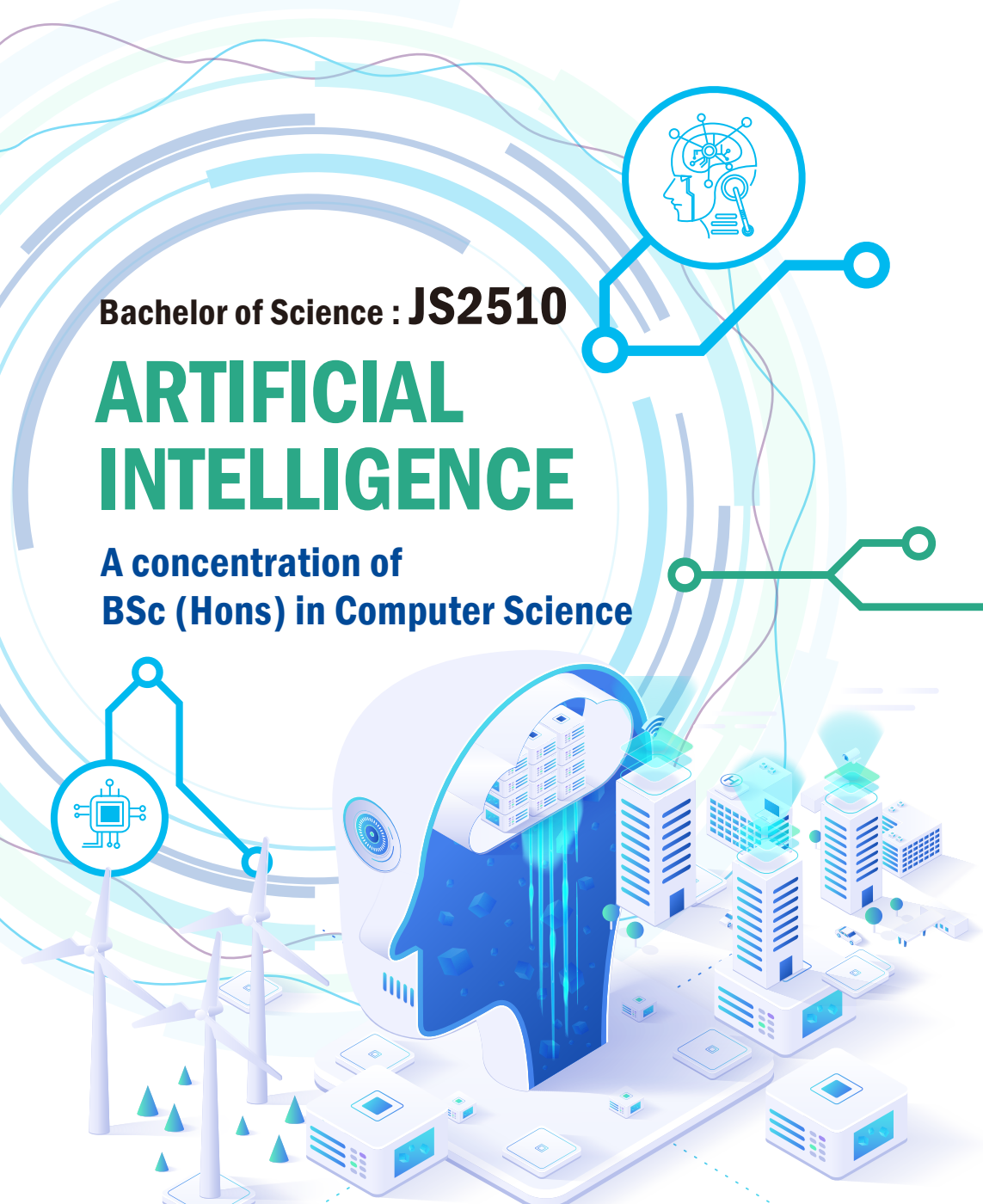


Bachelor of Science : JS2510

ARTIFICIAL INTELLIGENCE

**A concentration of
BSc (Hons) in Computer Science**



OVERVIEW

The AI concentration[#] provides students with a working knowledge of Artificial Intelligence (AI), and Machine Learning (ML) to participate in AI-related projects using computational methods.

[#]HKIE accredited concentration.

SOLID AND BROAD FOUNDATION IN COMPUTER SCIENCE

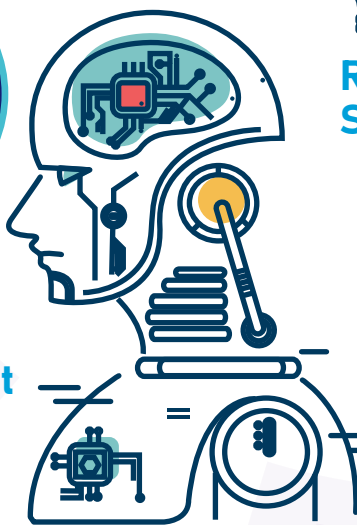
Core courses of AI Concentration contains key topics:



AI Development



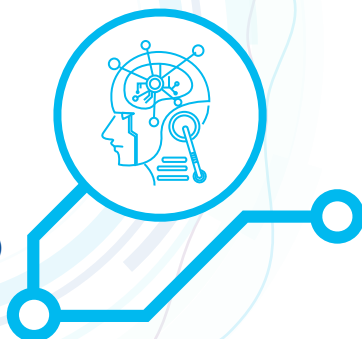
Computer Vision



Recommender Systems



Natural Language Processing



PRACTICAL TRAINING

There are class projects or mini projects associated to individual courses for students to apply what they have learnt from their courses to solve real life problems as well as to experience the importance of teamwork during software development. Each student should engage in a Final Year Project which is a highly independent problem solving activity during the final year of his/her study.



PROMISING FUTURE

AI Software Engineer, System Engineer (AI products), Data Scientist (NLP or Deep Learning), AI Java Developer (Fintech), AI Engineering, Analyst Programmer (FinTech), AI Specialist, etc.

STUDENT ENRICHMENT

Students can learn outside classroom for social interaction, interpersonal development, intellectual collaboration, multi-cultural learning, and community service. It paves the way for the students to become global citizens and business leaders. Students can join activities such as:

- Mentoring Scheme, Overseas Research, Company Visit, Competition, Student Society (Computer Science Society, HKIE Student Chapter, IEEE Student Chapter), Service or Experiential Learning



CAREER SUPPORT



DOUBLE CONCENTRATION OPTION

Students from AI Concentration are eligible to take Data and Media Communication (DMC) as the second concentration.

ENQUIRY

Department of Computer Science Faculty of Science

☎ (+852) 3411 7080

✉ comp@comp.hkbu.edu.hk

🌐 <https://www.comp.hkbu.edu.hk>

f <https://www.facebook.com/hkbu.comp>

📷 <https://www.instagram.com/hkbu.comp/>



Admissions Office Academic Registry

☎ (+852) 3411 2200

✉ 334jupas@hkbu.edu.hk (JUPAS)/

ardirect@hkbu.edu.hk (Non-JUPAS)

🌐 <https://admissions.hkbu.edu.hk>



The information provided in this pamphlet is correct to the best of our knowledge at the time of writing. Please refer to our website for latest information. In case of discrepancy, the information provided by Hong Kong Baptist University prevails.